



REF: GVAM87

## Bright apartment next to Vila Olimpica

Barcelona, Sant martí

We are pleased to offer for rent a 3 bedroom one bathroom apartment at 10mn walking distance from the beach of Vila Olimpica. It is located on a high floor which makes it very bright inside. About 10 years ago the whole apartment was renovated and the kitchen was given to the dining room creating a very nice large space next to the living room. The living room has its own exit to a very cozy terrace. Two of the three bedrooms are double, being exterior and the other bedroom overlooks the courtyard. We also have a full bathroom with all kinds of details. Laminate parquet floors, gas heating and double glazed windows. Split air conditioning in the living room. THE APARTMENT IS RENTED UNFURNISHED AND WITHOUT APPLIANCES. The location is unbeatable near the Pompeu Fabra University, Olympic Port, stores, restaurants and very well connected by public transport.

### Data sheet

#### Distribution

- Surface 68m2
- 3 rooms
- 1 bath
- Good condition

#### Characteristics

- Air conditioning
- Heating
- All exterior
- Energy rating: G

#### Additional Data

- Lift

### Global terms

The information on this website has been provided by third parties, as merely informative and is assumed correct. Glover Barcelona does not guarantee its veracity. The offer may be subject to inaccuracies, errors, unintentional omissions, price changes and / or withdrawal from the market without prior notice. The taxes corresponding to the rent, in particular the ITP are also at the expense of the lessee. Other particular conditions, such as duration, bond, guarantees, consumptions / supplies or community expenses when they exist, will be agreed and specified in each specific case.

**Map:**

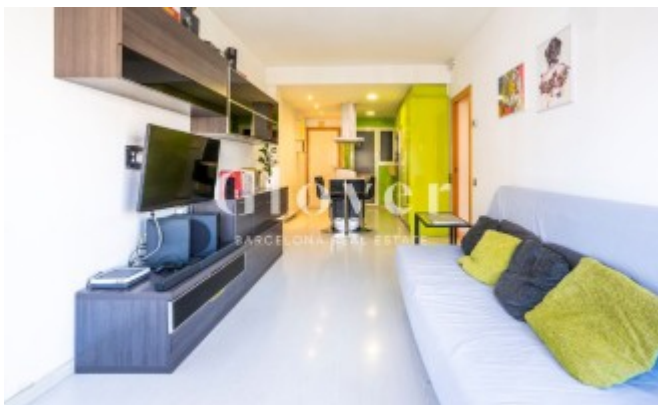
<https://www.google.com/maps/@41.3932,2.18819,16z?hl=en>

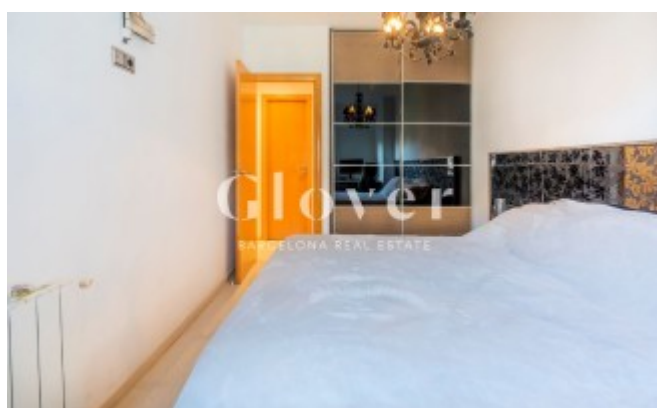
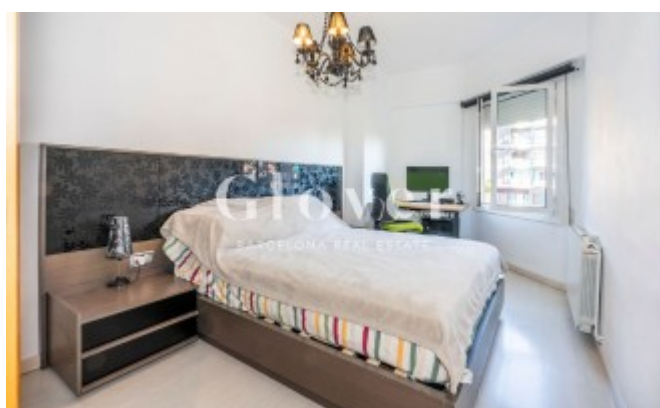
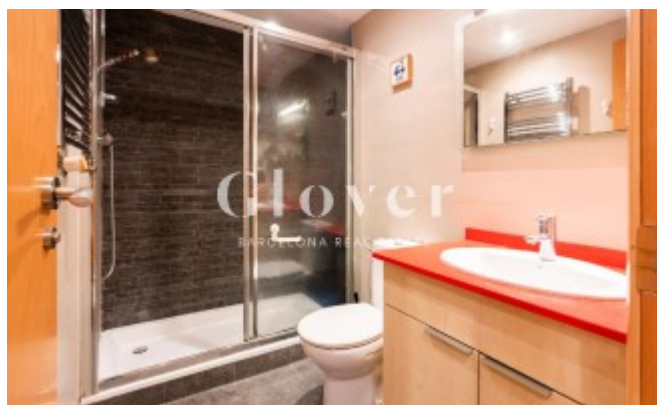
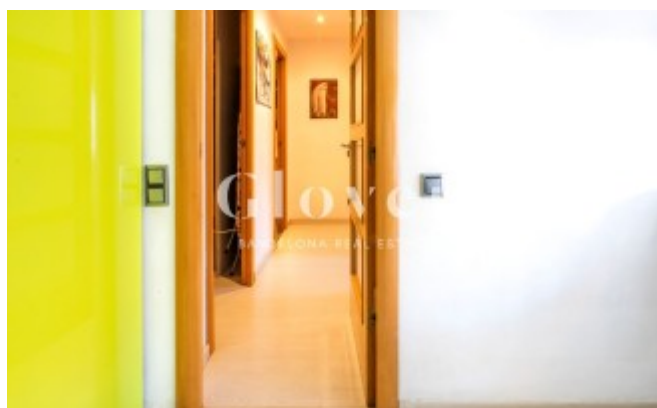
**Link:**

<https://www.gloverbarcelona.com/en/properties/barcelona-sant-marti-bright-apartment-next-vila-olimpica-578>

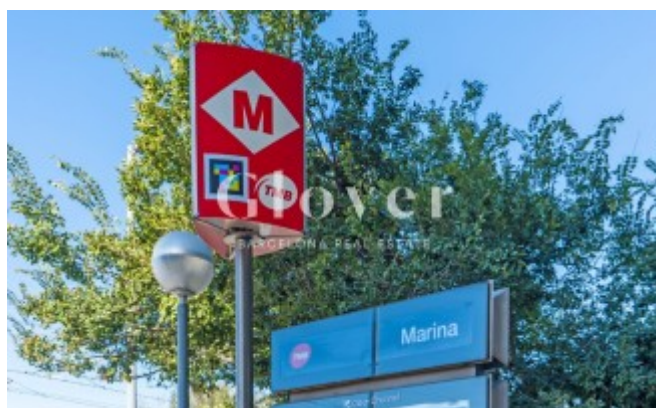
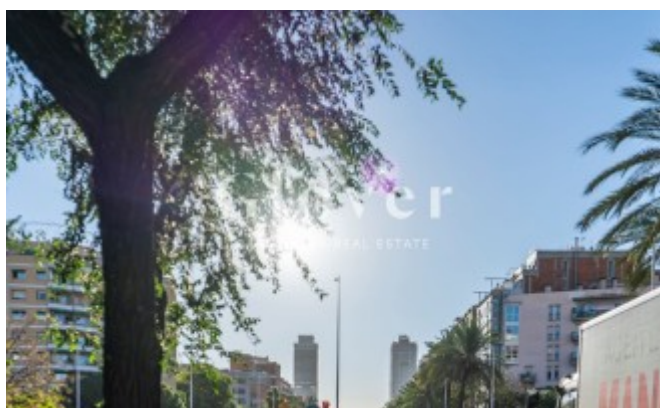












inferior  
6 €/m<sup>2</sup>

Índex  
16.55 €/m<sup>2</sup>

Àrea s  
22.67