



REF: GVAAP58A

Spectacular dwelling found in an emblematic building in the area of Pedralbes

Barcelona, Les corts

A rental apartment of 200 m2 in size is located in the last floor of one of the stateliest buildings of Pedralbes. The apartment is unfurnished, completely exterior and magnificently located. It comes equipped with a spacious dining room which is divided in three different zones with large picture windows in it. There are also five rooms and a service room. A spacious foyer divides the day area from the night area and from this foyer, one can access the room which serves as an office. There are three double rooms with one of them being a suite type double room with a spacious bathroom found outside. The other two rooms share the same bathroom which is separate from the one mentioned before. There are fitted wardrobes in all rooms. The flat has parquet floors, an air conditioning system, energy-efficient electric radiators and a gas heater for heating up the water. The parking place at the tenant's disposal fits small cars such as a Smart and a motorcycle. There are one storage rooms. It is a manorial estate with concierge service. The community fees for the apartment are included in the price.. Finally, the dwelling is very close to international schools, public transportation and parks..

Data sheet

Distribution

- Surface 201m2
- 6 rooms
- 3 baths
- Parking 1 place
- Good condition

Characteristics

- Air conditioning
- Heating
- Storage room
- All exterior
- Energy rating: E

Additional Data

- Lift

Global terms

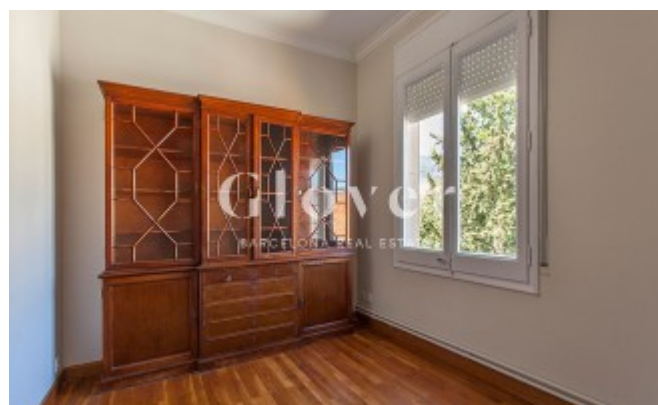
The information on this website has been provided by third parties, as merely informative and is assumed correct. Glover Barcelona does not guarantee its veracity. The offer may be subject to inaccuracies, errors, unintentional omissions, price changes and / or withdrawal from the market without prior notice. The taxes corresponding to the rent, in particular the ITP are also at the expense of the lessee. Other particular conditions, such as duration, bond, guarantees, consumptions / supplies or community expenses when they exist, will be agreed and specified in each specific case.

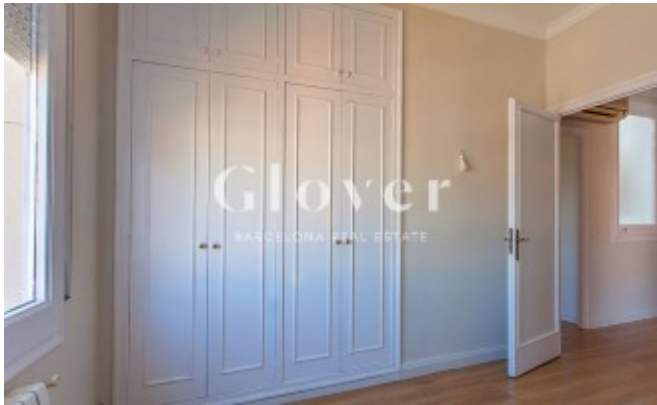
Map:

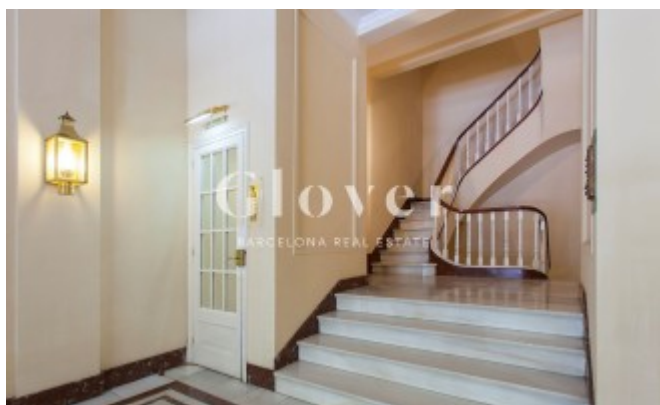
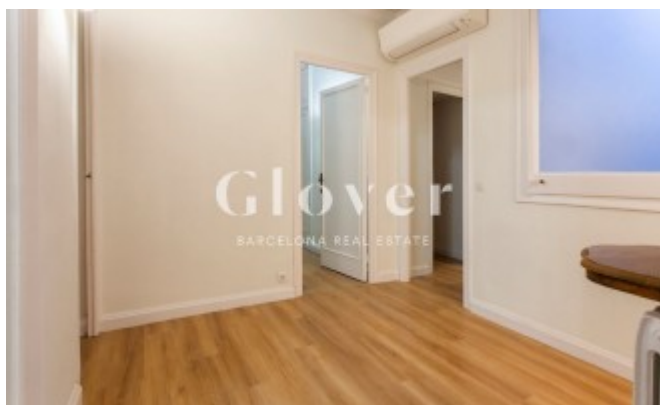
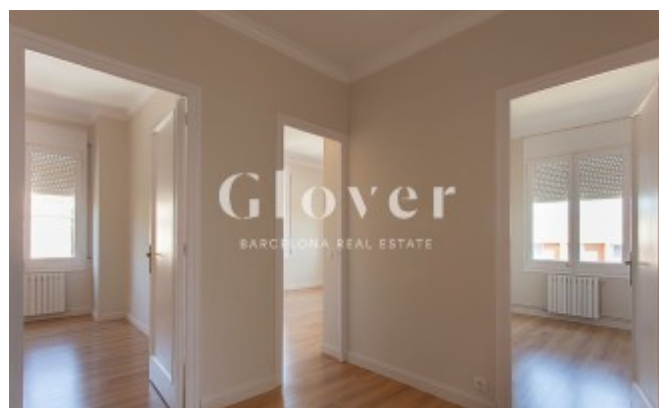
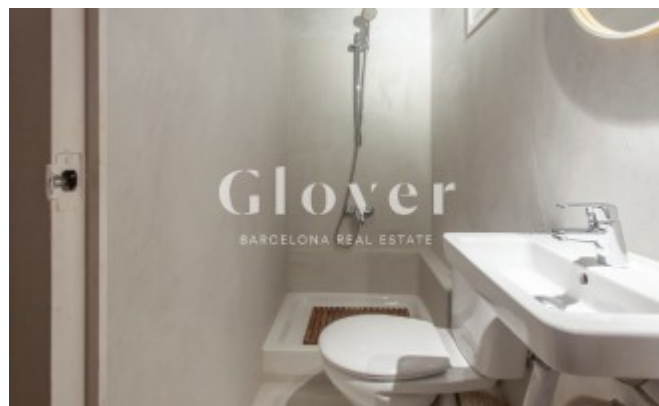
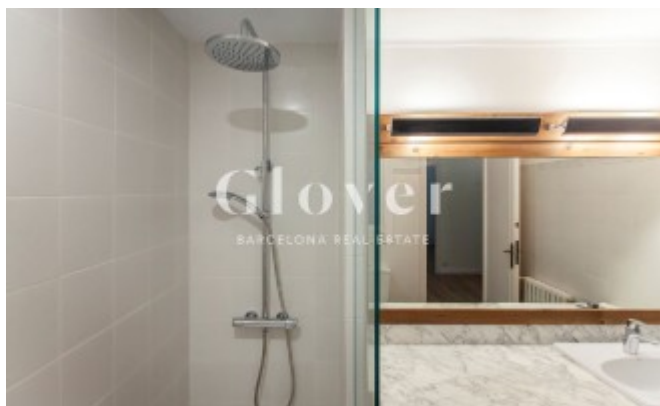
<https://www.google.com/maps/@41.3935,2.115,16z?hl=en>

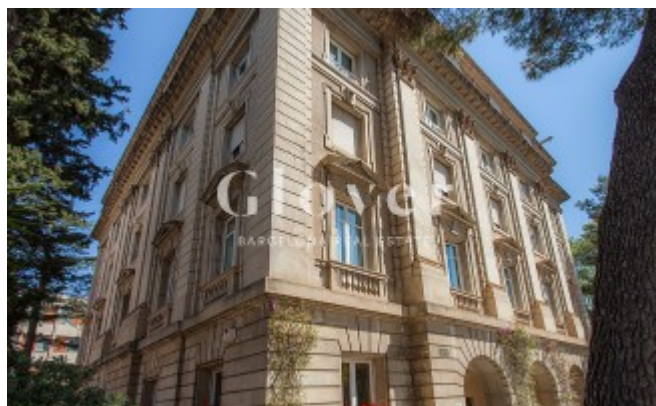
Link:

<https://www.gloverbarcelona.com/en/properties/barcelona-les-corts-spectacular-dwelling-found-emblematic-building-area-pedralbes-495>









Agència de l'Herència de Catalunya

Resultat

